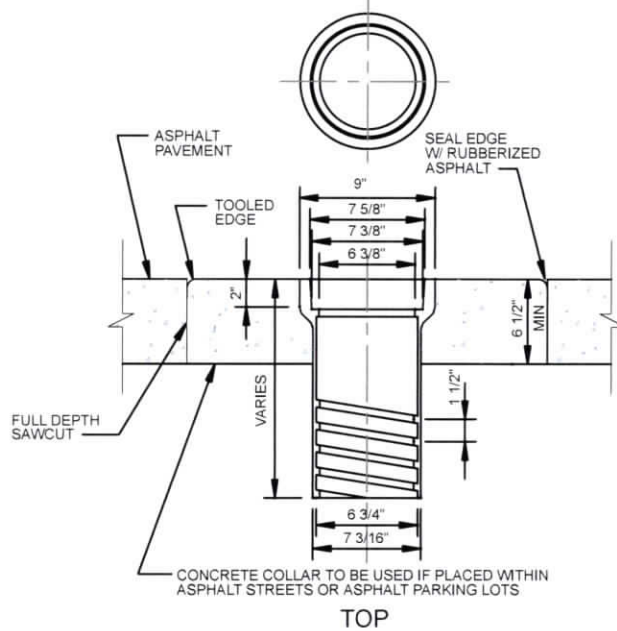
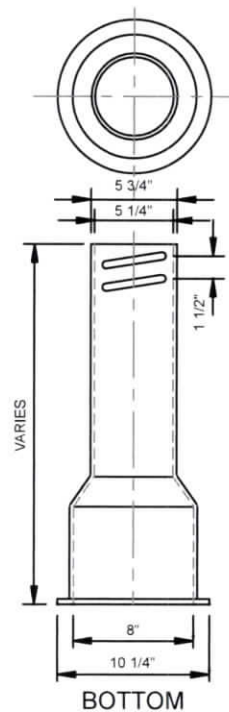


LID

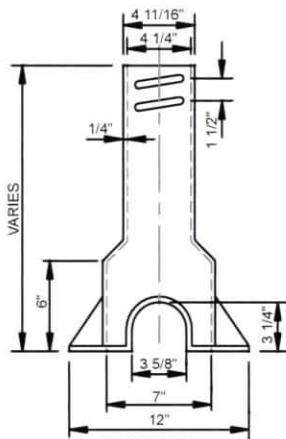
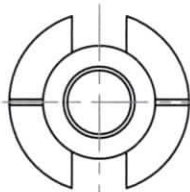


TOP

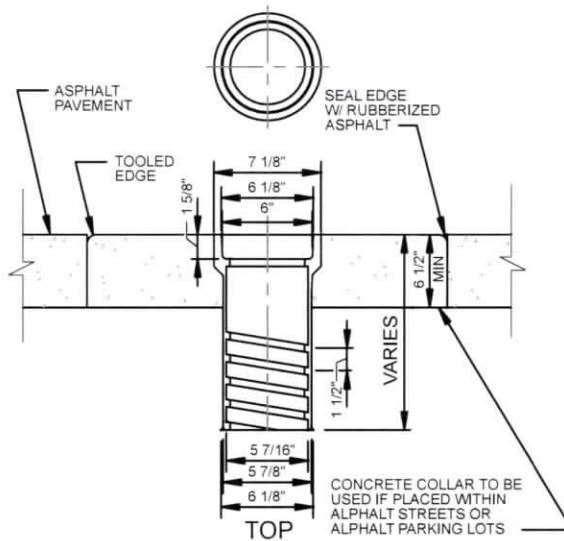
4" - 12" VALVE BOX DETAIL



BOTTOM

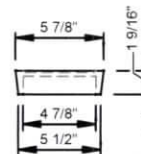


BOTTOM



TOP

2" - 3" VALVE BOX DETAIL



LID

NOTES:

1. IN PAVED AREAS, WATER LINE CONTRACTOR TO PLACE 2 FOOT SQUARE CONCRETE PAD AROUND EACH WATER VALVE AFTER PAVING IS COMPLETE. THE PAVEMENT SHALL BE FULL DEPTH SAW-CUT FOR PAD PLACEMENT.
2. VALVE BOXES REQUIRING OVER 2 ADDITIONAL BOTTOM SECTIONS SHALL BE EXTENDED USING PVC PIPE WITH A BOTTOM AND TOP SECTION PLACED ON TOP OF THE PVC PIPE.

STANDARD DETAIL SWATERWAT-14

REVISION	BY	DATE	VALVE BOX DETAIL STANDARD DETAILS	
			CITY OF COLLINSVILLE, OK.	
			ENGINEERING DIVISION	
			DATE: 02/2020	STANDARD NO. WAT-14