

**DIRECTION OF STREET STATIONING**



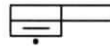
**DESIGN**

1



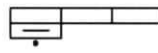
**THROAT**  
**GRATE**  
**STATIONING POINT**

1A

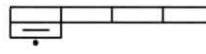


**SHOWN ON PLANS**  
**LEADS COME FROM**  
**GRATE SECTION**

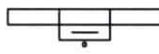
1B



1C



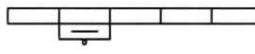
1(2A)



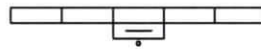
1(A+B)



1(A+C)



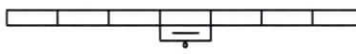
1(2B)



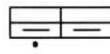
1(B+C)



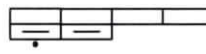
1(2C)



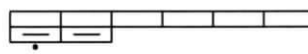
2



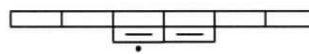
2(B)



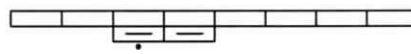
2(D)



2(2B)



2(B+D)



2(2D)



**NOTE:**  
EXPANSION JOINTS ARE  
REQUIRED BETWEEN  
SIDEWALK, CURB/GUTTER  
AND STORM INLET BOXES.

REVISION	BY	DATE	<b>CONFIGURATION OF CAST IRON CURB INLETS</b> STANDARD DETAILS	
			ENGINEERING DIVISION	
			DATE	STANDARD NO.
			02/2020	STRM-03

STANDARD DETAIL(S) STORM STRM-03