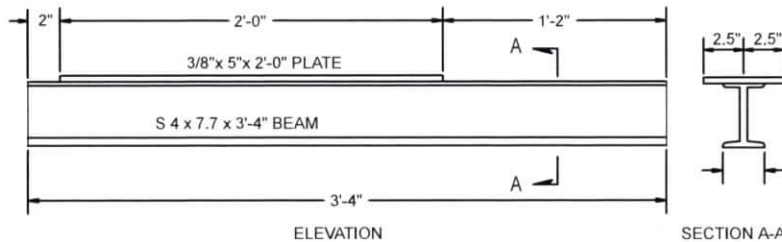


STORM SEWER INLET FRAME
NEENAH R-3077 OR AN APPROVED EQUAL



SUPPORT BEAM
PLATE TO BE USED WHEN
STRUCTURE IS BUILT ON
CURVED CURB

NOTE: USE IN CONJUNCTION WITH TYPE "A" AND TYPE "B" FRAMES.
NUMBER REQUIRED WILL BE SHOWN ON PLANS.

REVISION	BY	DATE	STORM SEWER INLET FRAME TYPE C STANDARD DETAILS	
			CITY OF COLLINSVILLE, OKLAHOMA	
			ENGINEERING DIVISION	
			DATE: 02/2020	STANDARD NO.: STRM-06